

Scotch[®]
Brand



Scotch® ATG 700 Adhesive Transfer Tape System

The power to bond. ATG bond.

A quick, easy and convenient
way to bond just about anything.



Versatility in your hands.

Trusted since 1971, the Scotch® ATG 700 Adhesive Transfer Tape System puts portable power in your hands. This small yet mighty system can handle many jobs — faster, cleaner and more conveniently than regular tape.

FASTER

Bond long, large and small surfaces. Finish multiple pieces quicker. No prep time. No cure time.

EASIER

Apply tape on any shape or form, or in uncomfortable positions. Just glide and go!

COST-EFFECTIVE

Refillable applicator. Use only the amount of tape you need. No waste!

SAFER

No harmful vapors or strong odors.



Dispenses double-sided tape easily on any shaped surface.

CLEANER

Consistent thickness with no mess from oozing, glue lines or overspray. Liner removes automatically and stays in applicator.

VERSATILE

Choose the right tape for your application and bond anything from paper and wood to metal, glass and hard-to-bond plastics.

CONVENIENT

Complete multiple jobs without reloading. Tape is easy to break off and liner is removed automatically. No electricity or hoses needed.

Thousands of uses in light and heavy industrial applications.

From appliance and automotive assembly to picture framing, the Scotch® ATG 700 Adhesive Transfer Tape System can be used in countless applications for reliable bonding.



Bond light-duty applications.

Scotch® ATG
Adhesive Transfer Tape 924



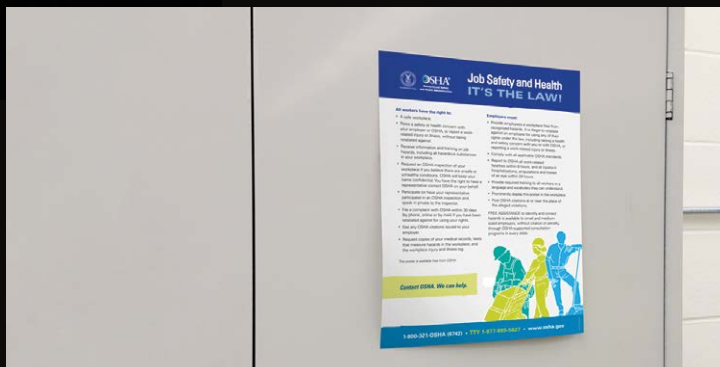
Bond heavy-duty applications.

Scotch® ATG
Adhesive Transfer Tape 969



Bond in extreme conditions.

Scotch® ATG
Adhesive Transfer Tape 926



Bond temporarily.

Scotch® ATG Repositionable
Double Coated Tissue Tape 928

Scotch® ATG 700 Adhesive Transfer Tape System



Scotch® ATG Adhesive Transfer Tape 924

Scotch® ATG Adhesive Transfer Tape 969

Scotch® ATG Adhesive Transfer Tape 926

Scotch® ATG Repositionable Double Coated Tissue Tape 928

Product	Tape Thickness w/o Liner (Mils/μm)	Description	Temp Resistance		Solvent Resistance	Relative Adhesion		Application Examples
			Short Term Examples (°C/°F)	Long Term Examples (°C/°F)		HSE*	LSE**	
Scotch® ATG Adhesive Transfer Tape 924	2.0/50	Provides excellent adhesion to most paper stocks for many general purpose needs.	121/250	82/180	Medium	Medium	Low	Bond paper folders, packages and displays. Bond mat board and dust covers in picture frames. Splice paper. Scrapbooking.
Scotch® ATG Adhesive Transfer Tape 969	5.0/130	Perfect for heavy-duty needs. Features high tack and excellent holding power to most plastics, metals, glass and UV-coated paper.	121/250	66/150	Medium	High	High	Bond fiberglass/foam layers in resin infusion processes to make composites. Bond automotive, including noise-damping material in auto engine covers. Bond UV-coated point-of-purchase display boxes.
Scotch® ATG Adhesive Transfer Tape 926	5.0/130	Works on a wide variety of substrates and materials, with excellent resistance to solvents and high temperatures.	232/450	149/300	High	High	High	Bond appliances, including aluminum foil in kitchen ovens.
Scotch® ATG Repositionable Double Coated Tissue Tape 928	2.0/50	High tack, low tack and repositionable, it bonds on contact and allows removal and reuse with many papers, foils and films.	82/180	65/150	Low	High/Low	Low/Low	Great for bonding temporarily in retail, woodworking, consumer goods, general industrial and more.

*High Surface Energy (HSE) Substrates: Copper, Aluminum, Zinc, Tin, Lead, Stainless Steel, Glass, Porcelain, Polyimide Film, Phenolic, Nylon, Alkyd Enamel, Polyester, Epoxy Paint, Polyurethane Paint, Polycarbonate, PVC Rigid, Acrylic

**Low Surface Energy (LSE) Substrates: PVA, Polystyrene, Acetal, EVA, Polyethylene, Polypropylene, Polyvinyl Fluoride (PVF), Fluoropolymer, Powder-Coated Paint

More tapes are available. Please contact your local 3M Sales Representative for details.

Product Selection and Use: Many factors beyond 3M's control and uniquely within user's knowledge and control can affect the use and performance of a 3M product in a particular application. As a result, customer is solely responsible for evaluating the product and determining whether it is appropriate and suitable for customer's application, including conducting a workplace hazard assessment and reviewing all applicable regulations and standards (e.g., OSHA, ANSI, etc.). Failure to properly evaluate, select, and use a 3M product and appropriate safety products, or to meet all applicable safety regulations, may result in injury, sickness, death, and/or harm to property.

Warranty, Limited Remedy, and Disclaimer: Unless a different warranty is specifically stated on the applicable 3M product packaging or product literature (in which case such warranty governs), 3M warrants that each 3M product meets the applicable 3M product specification at the time 3M ships the product. 3M MAKES NO OTHER WARRANTIES OR CONDITIONS, EXPRESS OR IMPLIED, INCLUDING, BUT NOT LIMITED TO, ANY IMPLIED WARRANTY OR CONDITION OF MERCHANTABILITY, FITNESS FOR A PARTICULAR PURPOSE, OR ARISING OUT OF A COURSE OF DEALING, CUSTOM, OR USAGE OF TRADE. If a 3M product does not conform to this warranty, then the sole and exclusive remedy is, at 3M's option, replacement of the 3M product or refund of the purchase price.

Limitation of Liability: Except for the limited remedy stated above, and except to the extent prohibited by law, 3M will not be liable for any loss or damage arising from or related to the 3M product, whether direct, indirect, special, incidental, or consequential (including, but not limited to, lost profits or business opportunity), regardless of the legal or equitable theory asserted, including, but not limited to, warranty, contract, negligence, or strict liability.



Industrial Adhesives and Tapes Division
3M Center, Building 225-3S-06
St. Paul, MN 55144

Phone 800-328-1681
Web 3M.com/ATG

© 3M 2017. All rights reserved. 3M, Scotch and the Plaid Design are trademarks of 3M Company. Please recycle. Printed in USA.

E70-0713-4632-7