



3M™ Scotchlite™ Reflective Material. Product Selector.

	Product	Home Wash	Industrial Wash	Tunnel-finisher	Tumbler	Ökotex	Flame resistant	Dry Cleaning
Fabrics	8912	60 x 60°C	-	-	-	YES	-	-
	8925	75 x 60°C	-	-	-	YES	-	50 x
	8935	50 x 60°C	-	-	-	-	YES	30 x
	8940	50 x 60°C	25 x 75°C	YES	YES	-	YES	30 x
	9910	100 x 60°C	30 x 75°C	-	YES	YES	-	50 x
	9920	100 x 60°C	40 x 75°C	YES	-	YES	-	30 x
	9925	100 x 60°C	50 x 75°C	YES	YES	YES	-	50 x
Transfer films	8711	25 x 60°C	-	-	-	YES	-	25 x
	8712	25 x 60°C	-	-	-	YES	-	25 x
	8725	50 x 60°C	-	-	-	YES	-	30 x
	8735	50 x 60°C	15 x 75°C	YES	YES	-	YES	-
	8787	-	-	-	-	-	-	-
	9720	50 x 60°C	25 x 75°C	YES	YES	YES	-	50 x
	5807	50 x 60°C	-	-	-	YES	-	30 x
Segmented transfer films	5510	50/75 x 60°C	-	-	-	YES	-	25/30 x
	5510 M	50/75 x 60°C	-	-	-	YES	-	25/30 x
	5530	50 x 60°C	15 x 75°C	YES	-	YES	-	-
	5535	65 x 60°C	15 x 75°C	YES	YES	-	YES	-
Fire market products	8986 NFPA	-	-	-	-	-	YES	-
	8987 NFPA	-	-	-	-	-	YES	-
	9687 N	50 x 60°C	-	-	-	-	YES	30 x

Important Notes

The data included in this document was correct at the time this document was published. Reference the current Technical Data Sheet and Certifications on 3m.com/Scotchlite for full information. 3M recommends you test each product with your standards, equipment and garments

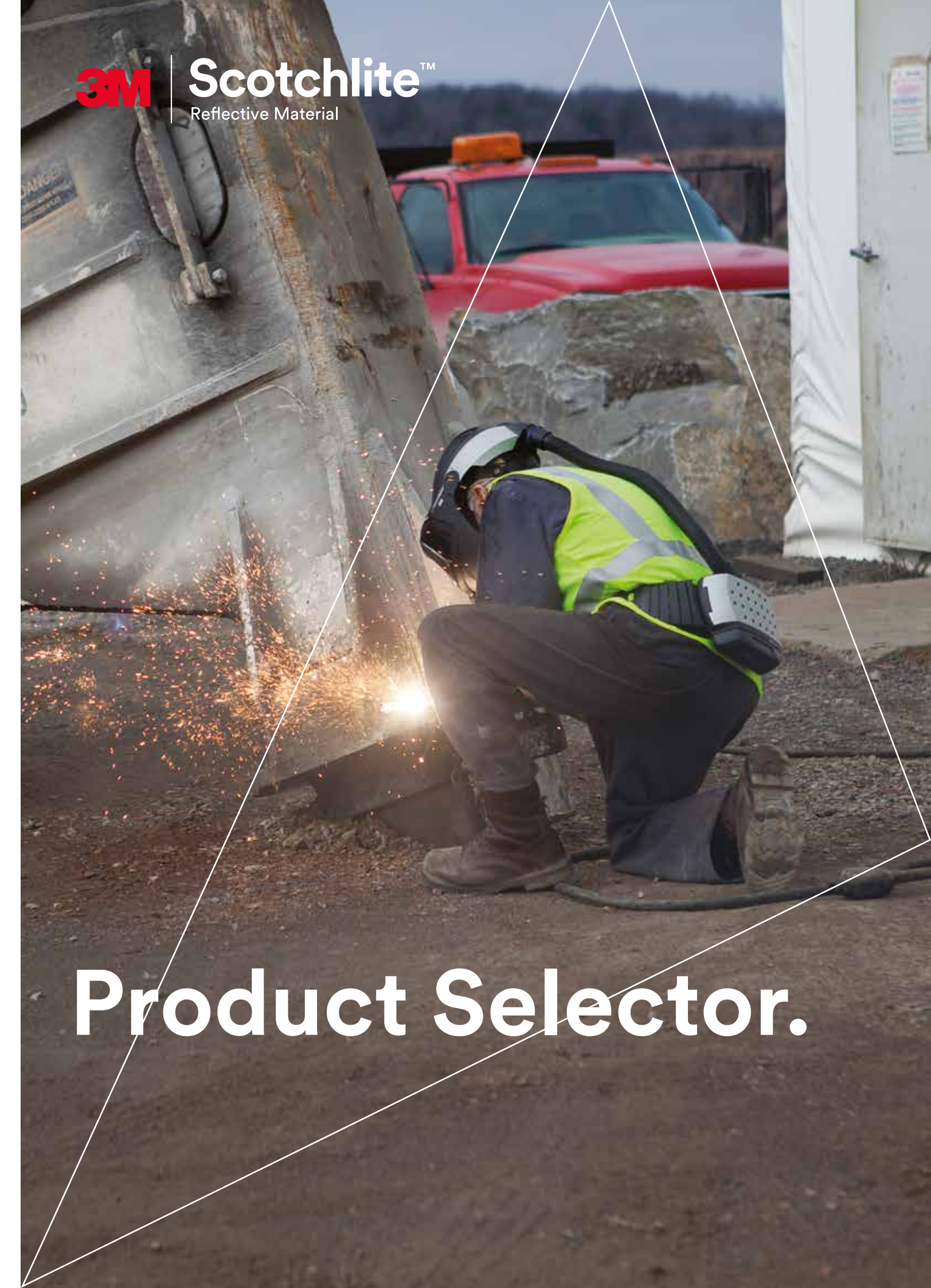
PRODUCT USE: Because of the variety of factors that can affect the use and performance of 3M Scotchlite reflective material, user is solely responsible for evaluating the product and determining whether it is fit for a particular purpose and suitable for user's method of application. User is solely responsible for determining the proper amount and placement of the product. While reflective products enhance visibility, no reflective product can ensure visibility or safety under all possible conditions. 3M may change the product, specification and availability of the product as improvements are made; therefore, user should contact 3M for latest information before specifying the product.



3M Europe
Personal Safety Division
Hermeslaan 7
1831 Diegem
Belgium

www.Scotchlite.com

3M and Scotchlite are registered brands of 3M. Please recycle.
Printed in Germany.
© 3M 2016. All rights reserved.



Product Selector.

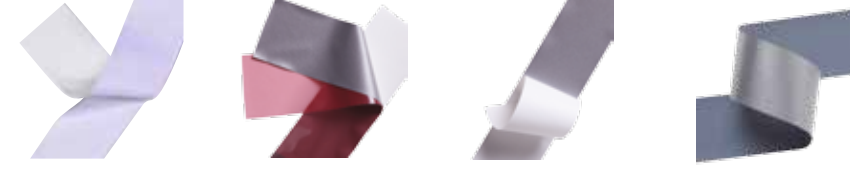
3M | **Scotchlite™**
Reflective Material

3M™ Scotchlite™ fabrics.



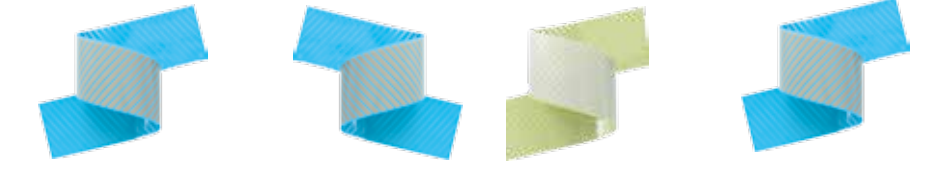
Features	8912	8925	8935	8940
Daytime color	Silver	Silver	Silver	Silver
Backing fabric	65 % Poly/ 35 % Cotton Fabric	65 % Poly/ 35 % Cotton Fabric	100 % Cotton Fabric	100 % Aramid
60°C Home Wash ISO 6330 – 6N	60 x	75 x	50 x	50 x
75°C Industrial Wash ISO 15797-8	–	–	–	25 x
Tunnelfinisher	–	–	–	YES
Tumbler	–	–	–	YES
Oeko-Tex certified	YES	YES	–	–
Flame resistant	–	–	YES	YES
Dry cleaning ISO 3175	–	50 x	30 x	30 x
Special feature	–	–	–	–
European certifications	ISO 20471	ISO 20471	ISO 20471 EN 469 HuPF ISO 11611 ISO 11612 ISO 14116	ISO 20471 EN 469 HuPF ISO 11611 ISO 11612 ISO 14116

3M™ Scotchlite™ transfer films.



Features	8711	8712	8725	8735
Daytime color	Silver	Silver	Silver	Silver
Backing adhesive	100 % Polyurethan	100 % Polyurethan	100 % Poly	100 % Poly
60°C Home Wash ISO 6330 – 6N	25 x	25 x	50 x	50 x
75°C Industrial Wash ISO 15797-8	–	–	–	15 x
Tunnelfinisher	–	–	–	YES
Tumbler	–	–	–	YES
Oeko-Tex certified	YES	YES	YES	–
Flame resistant	–	–	–	YES
Dry cleaning ISO 3175	25 x	25 x	30 x	–
Special feature	–	Front side 3M logo for authenticity	Front side 3M logo for authenticity	–
European certifications	ISO 20471	ISO 20471	ISO 20471	ISO 20471 EN 469 ISO 11611 ISO 11612 ISO 14116

3M™ Scotchlite™ transfer films.

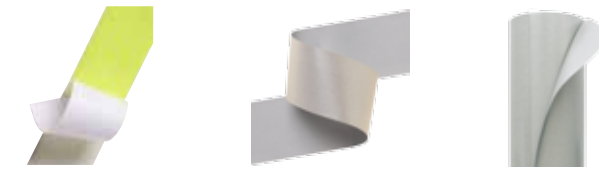


Features	5510	5510 M	5530	5535
Daytime color	Silver	Silver	Silver	Silver
Backing adhesive	100 % Pol	100 % Poly	100 % Poly	100 % Poly
60°C Home Wash ISO 6330 – 6N	50/75 x	50/75 x	50 x	65 x
75°C Industrial Wash ISO 15797-8	–	–	15 x	15 x
Tunnelfinisher	–	–	YES	YES
Tumbler	–	–	–	YES
Oeko-Tex certified	YES	YES	YES	–
Flame resistant	–	–	–	YES
Dry cleaning ISO 3175	25/30 x	25/30 x	–	–
Special feature	–	–	–	–
European certifications	ISO 20471	ISO 20471	ISO 20471	ISO 20471

3M™ Scotchlite™ Fire market products.



Features	9910	9920	9925
Daytime color	Silver	Silver	Silver
Backing fabric	100 % Poly	100 % Poly	100 % Poly
60°C Home Wash ISO 6330 – 6N	100 x 60°C	100 x 60°C	100 x 60°C
75°C Industrial Wash ISO 15797-8	30 x	40 x	50 x
Tunnelfinisher	–	YES	YES
Tumbler	YES	–	YES
Oeko-Tex certified	YES	YES	YES
Flame resistant	–	–	–
Dry cleaning ISO 3175	50 x	30 x	50 x
Special feature	–	–	–
European certifications	ISO 20471	ISO 20471	ISO 20471



Features	8787	9720	5807
Daytime color	Lime yellow	Silver	Silver
Backing adhesive	100 % Poly	100 % Poly	100 % Poly
60°C Home Wash ISO 6330 – 6N	–	50 x	50 x
75°C Industrial Wash ISO 15797-8	–	25 x	–
Tunnelfinisher	–	YES	–
Tumbler	–	YES	–
Oeko-Tex certified	–	YES	YES
Flame resistant	–	–	–
Dry cleaning ISO 3175	–	50 x	30 x
Special feature	–	–	–
European certifications	ISO 20471	ISO 20471	ISO 20471



Features	8986 NFPA	8987 NFPA	9687 N
Daytime color	Red orange	Lime yellow	Yellow-Silver-Yellow
Backing adhesive	100 % Cotton	100 % Cotton	100 % Aramid
60°C Home Wash ISO 6330 – 6N	–	–	50 x
75°C Industrial Wash ISO 15797-8	–	–	–
Tunnelfinisher	–	–	–
Tumbler	–	–	–
Oeko-Tex certified	–	–	–
Flame resistant	YES	YES	YES
Dry cleaning ISO 3175	–	–	30 x
Special feature	–	–	–
European certifications	EN 469 ISO 11611 ISO 11612 ISO 14116	EN 469 ISO 11611 ISO 11612 ISO 14116	ISO 20471 EN 469 HuPF ISO 11611 ISO 11612 ISO 14116